

USER MANUAL

Alb Filter[®] **DUO**

...naturally better water



Blaufaktor GmbH & Co. KG
Riedweg 12
D-78607 Talheim

 www.alb-filter.com
 info@alb-filter.com

Thank you very much for purchasing our
Alb Filter® DUO

To ensure correct installation and efficient operation of the water filter, please follow the installation instructions below.

MEANING OF PICTOGRAMS

- ⚠ Increased attention required
- ℹ Additional information
- ✓ Note
- 🔧 Tool required
- 🛒 Purchase additionally

INHALT

Meaning of pictograms.....	2
Preamble.....	4
Description.....	5
Scope of delivery	6
Specifications.....	7
Components – Alb Filter® DUO.....	8
Please note before installation.....	10
Determine connection thread.....	10
Installation Alb Filter® DUO	12
Changing the filter cartridge.....	16
Filter cartridges for the Alb Filter® DUO.....	20
Cartridge replacement interval	20
Maintenance and care	21
General safety informations	22
Reminder to change the filter cartridge.....	24

PREAMBLE

Alb Filter® - a matter of heart.
We are pleased that you have chosen Alb filter.

Since 2001 we can look back on a great experience in the field of water treatment.

At a time when even the smallest part seems to come from the Far East, we at Alb Filter stand for quality from the centre of the Swabian Alb. A production site in southern Germany, which is characterized by the highest standards and precision in many areas.

We feel committed to our region and manufacture our products with our partners in the surrounding area.

A real piece of home - **Made in Germany.**



DESCRIPTION

The Alb Filter® DUO - a high quality water filter for installation directly on the tap.

Alb Filter® DUO is ideal for:

- Drinking water treatment
- Preparation of food (cooking water)
- Cleaning of food

The water filter is installed directly on the kitchen faucet. For this purpose the bypass is screwed to the standardized outlet (M22 AG/M24 IG) instead of the jet regulator.

By means of a practical switch lever, it is possible to choose between filtered and unfiltered water.

SCOPE OF DELIVERY

i Note:

Please check that the delivery is complete before commissioning - it consists of

- **Alb Filter® DUO filter housing with aerator bypass and changeover function**
- **Alb Filter® Cartridge**

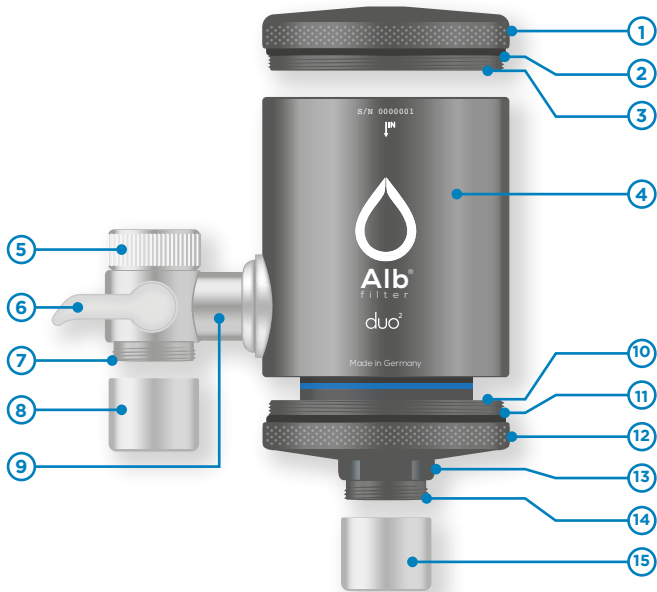
Further accessories as well as replacement filter cartridges, thread adapters and discount offers can be found at

www.alb-filter.com

SPECIFICATIONS

- **Design:**
Water filter system for installation on fittings
- **Material:** Special alloy anodized, food grade
- **Cartridge and capacity:**
Depending on the selected version
- **Connection of the inlet of the fitting:**
Standard connection for fittings with M22x1 outlet thread (female thread)
- **Flow rate:** approx. 5-11 liters per minute - depending on cartridge type (at approx. 2-3 bar water pressure)
- **Dimensions WxHxD:** 115 x 125 x 69 mm
- **Weight without cartridge:** approx. 450 g

COMPONENTS - ALB FILTER® DUO



1. Upper cap
2. Sealing ring (top)
3. Threaded screw connection (upper sealing cap)
4. Filter body with internal thread on top and bottom
5. Threaded connection with ripped union nut and head seal for water filter fittings with standard connection M22 x 1 female thread
6. Switching lever: Unfiltered water / filtered water
7. Aerator thread (external thread: M22 x 1)
8. Aerator with head seal (unfiltered water)
9. Inlet bridge for filter housing with 4 mm allen hollow screw and sealing ring.
10. Threaded screw connection (lower sealing cap)
11. Sealing ring (bottom)
12. Lower cap with faucet aerator thread
13. Wrench width 24 mm for open-end wrench
14. Aerator thread (external thread: M22 x 1)
15. Aerator with head seal (filtered water)

PLEASE NOTE BEFORE INSTALLATION

The Alb Filter® DUO has a standard M22 female thread, suitable for most taps with M22 male thread. If your faucet does not have a M22 external thread, you will need an adapter.

🛒 Adapter available at www.alb-filter.com
Shop Category: Accessories

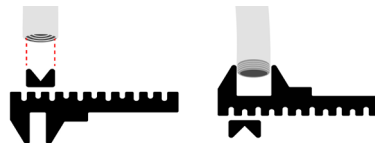
DETERMINE CONNECTION THREAD

The two most common jet control variants are called **M22** or **M24** in technical terms. Furthermore there are further sizes e.g. **M16**, **M18** and **M21**, which are however less common.

📄 Online thread guide for more details at www.alb-filter.com

Procedure for determining their connection thread:

1. Remove your aerator from the fitting. If necessary, use a pipe wrench with jaw protection or a mounting key.
2. Measure the diameter of the thread on the tap. Alternatively, measure the diameter at the unscrewed aerator.



Ø (inner) mm	Ø (outer) mm	Type
16,9	17,8	M18 x 1
18,9	18,8	M19 x 1
20,9	21,8	M22 x 1
22,9	23,8	M24 x 1

INSTALLATION ALB FILTER® DUO

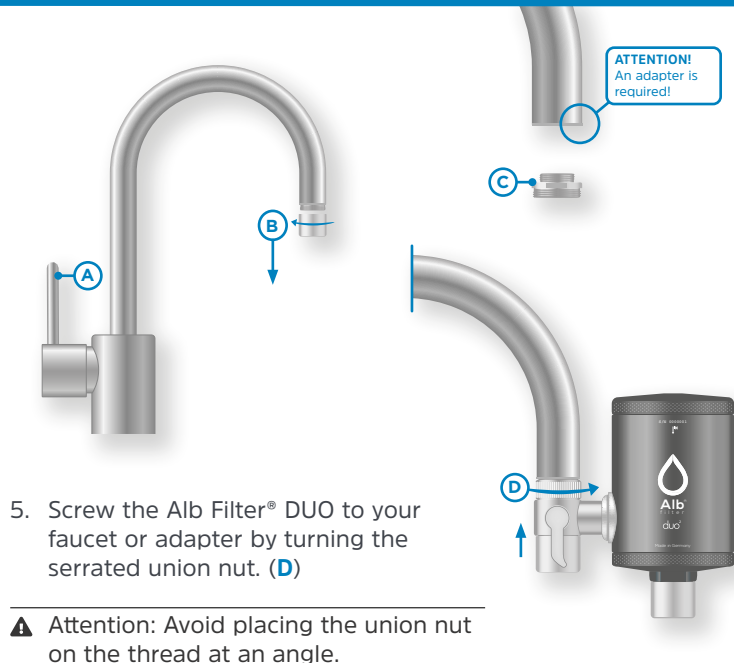
Procedure:

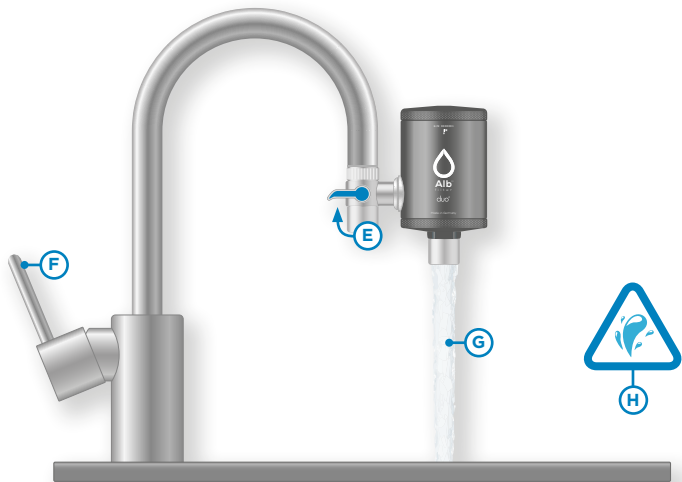
1. Make sure that your water tap is closed (A). Remove the Alb Filter® DUO from its packaging.

⚠ If the cartridge is not pre-installed, please follow the instructions for changing the cartridge on page 16.

2. Remove the aerator of your faucet using a suitable tool. (B)
3. Check the condition of the thread of your fitting and, if necessary, remove lime and other deposits.
4. If your armature does not have a standard M22 external thread, screw the previously determined thread adapter into your armature. (C)

i If you have any questions about the thread adapters, you can contact us using the contact details on our website.





-
- i** We recommend to mount the Alb Filter® DUO on the right side or aligned to the front to make the switchover function (filtered/unfiltered) easier to operate.
-

6. Check that the Alb Filter® DUO is correctly and firmly attached to your faucet. If necessary, use a pair of pliers with jaw protection to tighten the union slightly.
7. Before opening the water inlet of your faucet, make sure that the switch lever is in vertical (downward) position. Mode: **Unfiltered**.
8. Set the switch lever to horizontal position (Mode: **Filtered**) (**E**). Then slowly open the water inlet of your faucet. (**F**)
9. Now let the water run through the water filter for 5 minutes to activate it. (**G**)


-
- i** Production-related activated carbon dust may dissolve during rinsing and slightly cloud the water during the cartridge activation process.
-


10. Check the water filter housing and all connected components for leaks. (**H**)
11. The Alb Filter® DUO is now ready for use.

CHANGING THE FILTER CARTRIDGE

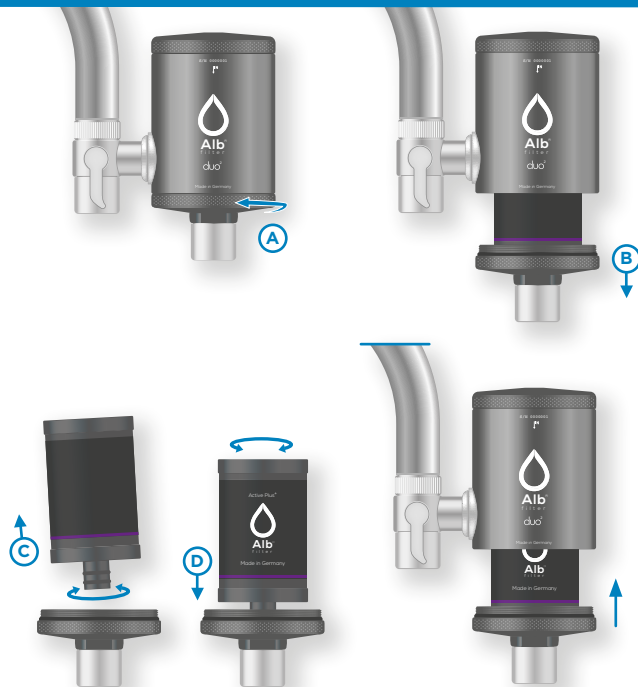
Procedure:

1. Close the inlet of your faucet.
2. Unscrew the lower cap of the Alb Filter® DUO from the filter body. (A)
3. Pull the cap downwards. The filter cartridge becomes visible. (B)

 Please use a 24 mm open-end wrench if the cover is tight. Use a cloth to avoid scratches.

 The filter cartridge sits in the lower sealing lid with the help of two O-rings (press fit).

4. Now pull the filter cartridge out of the lower cap with a slight turning movement. (C)
5. Press the new filter cartridge into the receptacle of the lower cap with slight turning movements. (D)

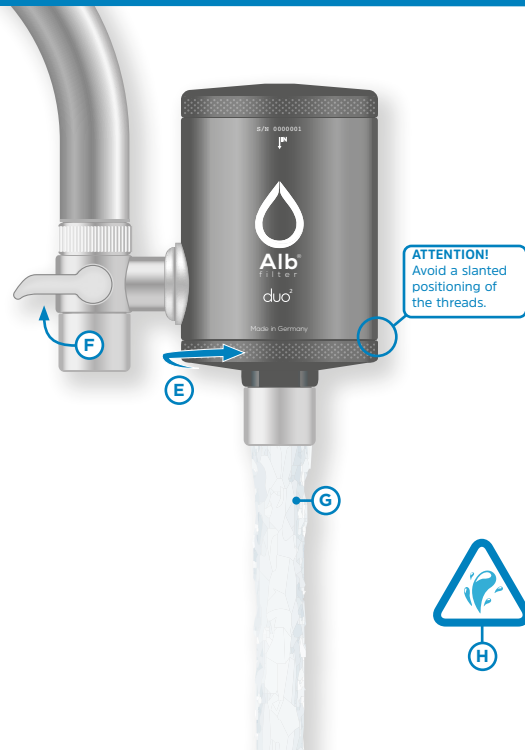


i If the filter cartridge is difficult to install, the sealing rings of the filter cartridge should be wetted with water or vaseline/milking grease (food safe).

6. Screw the lower cap back onto the filter body and tighten it hand-tight. A gap (1 mm) may be visible! **(E)**
7. Move the switch lever to the horizontal position (Mode: **Filtered**) **(F)**. Then slowly open the water inlet of your faucet.
8. Now let the water run through the water filter for 5 minutes to activate it. **(G)**

i Production-related activated carbon dust may dissolve during rinsing and slightly cloud the water during the cartridge activation process.

9. Check the water filter housing and all connected components for leaks. **(H)**
10. The Alb Filter® DUO is now ready for use.



FILTER CARTRIDGES FOR THE ALB FILTER® DUO

You can use different filter cartridges in the Alb Filter® DUO, including the filter types:

ACTIVE, ACTIVE PLUS+ and NANO

Further information on the respective filter cartridges can be found on our website at www.alb-filter.com as well as on the documents belonging to the filter cartridge.

CARTRIDGE REPLACEMENT INTERVAL

We recommend changing the filter cartridges every four to six months (according to DIN 1988). They should also be replaced after longer periods of standing (> 6 weeks). Warranty claims are void if these instructions are not observed.

Please dispose of used filter cartridges in residual waste.

MAINTENANCE AND CARE

The Alb Filter® DUO is generally low maintenance. However, the maximum service life of the filter cartridges must be observed.

Clean and lime-free fittings are the prerequisite for hygienically perfect drinking water.

To remove limescale, we recommend the use of a vinegar cleaner

Depending on the water quality, it may be necessary to remove any deposits that have formed inside the housing with a cloth (e.g. kitchen towel) every two months.

In case of calcareous water (>15°dH) and very frequent operation, the changeover valve in the changeover lever (6) may be damaged under certain circumstances. In this case the bypass can be replaced. (Available under the store category: Accessories)

GENERAL SAFETY INFORMATIONS

- In case of improper installation no liability will be accepted for any damage arising.
- Maximum operating temperature: 45 degrees.
- Protect from frost.
- Do not use on a faucet with pull-out shower.
- The cartridge should be replaced after 4-6 months. However, observe the replacement interval of the used cartridges individually.
- Earlier replacement may be necessary if the water flow is visibly reduced or the water quality deteriorates.
- Early replacement is not a defect in the cartridge used, but rather an indication of increased occurrence of fine particles or pollutants in unfiltered water.
- In exceptional cases with very cold water in the supply line (for physical reasons) condensation water can form on the filter housing.
- To ensure complete certainty regarding the quality of your filtered water, a water analysis in a competent laboratory is mandatory.
- In connection with unpressurized boilers, it should be noted that due to the high fineness of the cartridge, a pressure is built up

in front of it (approximately at the level of the mains pressure), which is only slowly reduced. Under certain circumstances this can lead to damage to the non-pressure-resistant boiler. Please contact your responsible installer.

- No liability can be accepted for the consequences of using filter cartridges from other manufacturers. We strongly recommend the use of original Alb filter cartridges.
- Caution: In accordance with applicable regulations, never operate the water filter on the drinking water network without a system separator. Make sure that the connection of your domestic waterworks to which the water filter is operated is equipped with a system separator according to EN 12729 type BA. Water that has flowed through a system separator is no longer considered drinking water.
- Please observe the applicable drinking water regulations of your country before installation and commissioning.

REMINDER TO CHANGE THE FILTER CARTRIDGE

We would like to remind you to change your filter cartridge. Please use our practical Email reminder service:

www.alb-filter.com/reminder

E-Mail

Commissioning date

Which cartridge was installed?

Set reminder

Keep the overview - When was the cartridge put into operation and when should it be changed? According to DIN 1988 every 4-6 months.

Start	End	Note

 Replacement cartridges available at **www.alb-filter.com** – Shop category: Filter Cartridges

Video Tutorials Online



<https://alb-filter.com/en/installation-faucet>

©2020
Blaufaktor GmbH & Co. KG
Riedweg 12
D-78607 Talheim
www.alb-filter.com
info@alb-filter.com

All rights reserved. No part of this manual may be reproduced in any form or reproduced or processed using electronic, mechanical or chemical processes without the written consent of the publisher.

It is possible that this manual still has printing defects or printing errors. However, the information in this manual is checked regularly and corrections are made in the next issue. We accept no liability for technical or printing errors and their consequences.

All trademarks and industrial property rights are acknowledged. Changes in line with technical progress may be made without prior notice. Illustrations and diagrams are not binding. All brand and product names used serve only to clarify the compatibility of our products with certain products from various other manufacturers and are the property of their respective owners.
V2.1 (01/2020)

